



NVS2500



NAB2009 SHOW

Backup Speeds

- SxS: 80MB/s
- P2E: 70MB/s
- P2: 60MB/s



NVS2525
 (Due in Q4 2010)

NEXTO DI

For Tapeless Camcorders

Portable Backup Storage Device



Backup Various Types of Memory Cards

- SxS · P2/P2E (Bundled adapter) · CF · SD/SDHC/MMC/MMCPlus/MS



Safe Data Management

- Success or Failure feedback of previous backup operation · Recover Bad Sectors · Safe Copy



Preview Video Clips

- XDCAM MPEG2 · AVC-Intra100 / 50 · Ikegami MPEG2 Full HD · Canon MPEG2 Full HD · AVCHD · HDV
- Convergent Design MPEG2 Full HD · JVC MPEG2 Full HD · DVCCAM · DVCPRO · DVCPRO 50 · DVCPRO · DV



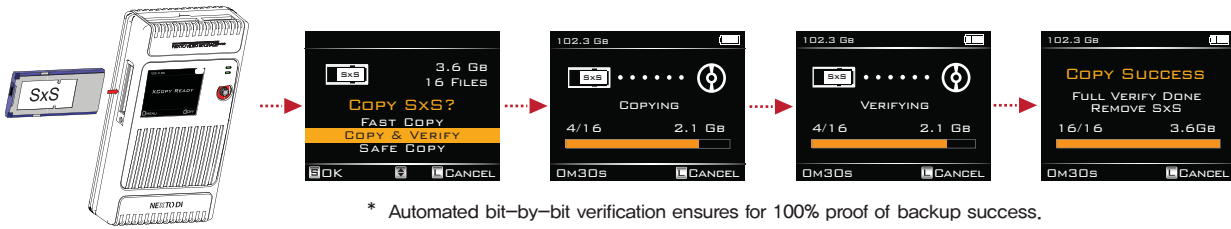
Shock Protection

- Built-in free fall sensor · Internal Foam Padding System · Set of Rubber Bumpers

Manufactured By NextoDI Co., Ltd.

The safest way to backup your data

- **Step 1: Copy & Verify – 14 minutes for 32GB P2 or SxS solid-state memory card**
(Takes 7 minutes to Copy and 7 minutes to Verify)



* Automated bit-by-bit verification ensures for 100% proof of backup success.

After successful completion of copying process, NVS2500 performs verification for comparing the file on the card and the file on the hard disk for helping to determine whether data was accurately copied

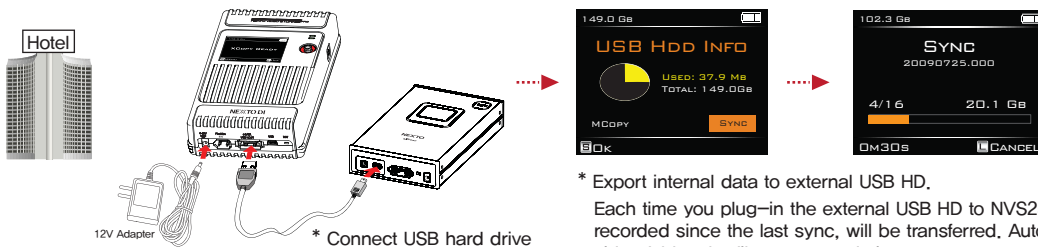
- **Step 2: Preview your video footage for safety.**



* Preview your video footage using 2.4" color LCD.

To boost your confidence, you can view your video clips on the 2.4 inch LCD screen.

- **Step 3: Generate secondary backup**



* Export internal data to external USB HD.

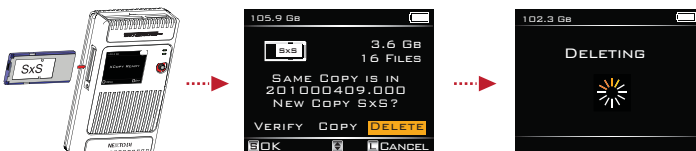
Each time you plug-in the external USB HD to NVS2500, it syncs at any files recorded since the last sync, will be transferred. Automatically compare the video folders by file names and sizes.

- **Step 4: Preview your video footage from an external USB HD**



* Select [External Device] under Preview menu and plug-in the USB HD to NVS2500. You can preview video clips that stored on external USB HD directly on the LCD

- **Step 5: Deleting contents of memory cards**



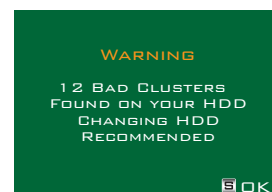
* Re-insert a memory card into NVS2500's card slot and it's now safe to delete contents on a memory card for reuse. It's very unlikely that the two separate hard disk drives fail at the same time.

Safe Data Management – I

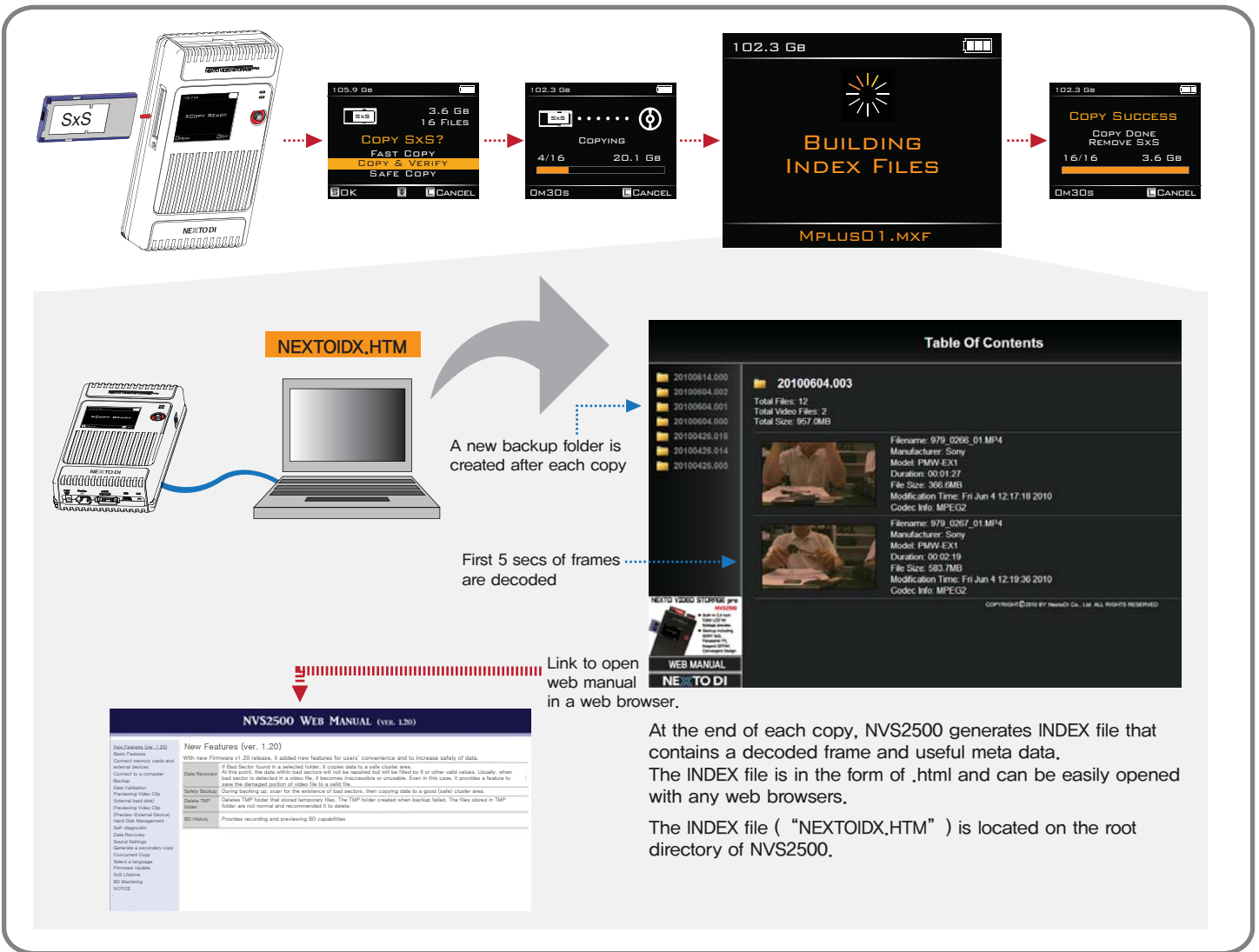
- **Success or Failure feedback of previous backup operation**

After successful completion of copying process, NVS2500 shuts down automatically after few seconds to reserve battery power. Next time you power on the NVS2500, it displays a result of previous backup status for helping you to determine whether you can safely delete the contents of memory card.

During the boot sequence, NVS2500 runs a surface scan and displays a warning if there were any errors found on internal hard disk drive.



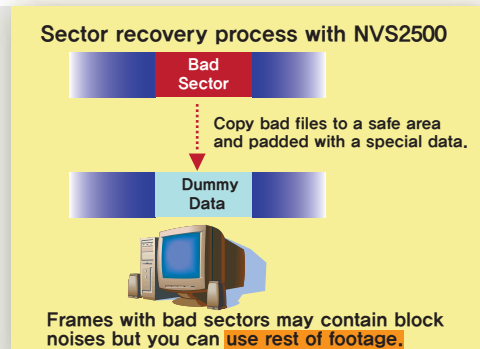
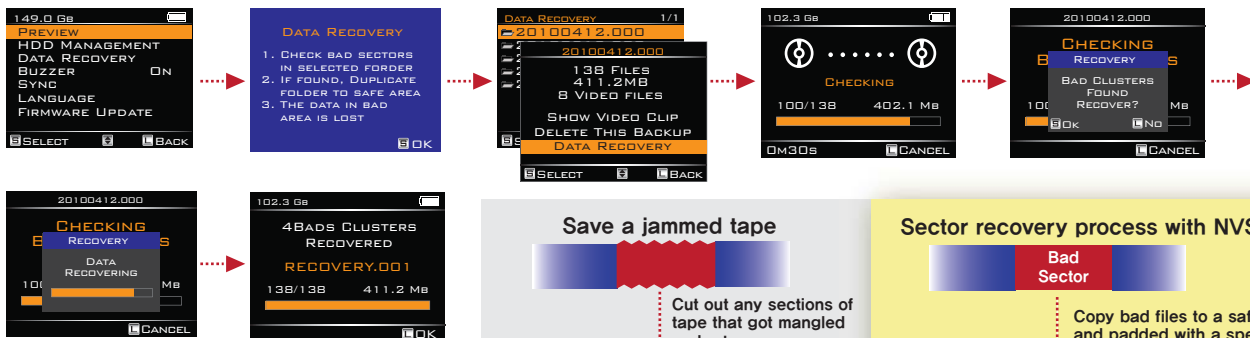
Auto-generation of Index File



Safe Data Management – II

■ Bad Sector Recovery (*Only applies to supported video formats that can be previewed)

If a video footage contains a bad sector, you cannot get the clips onto your computer to edit. NVS2500 performs recovery of the bad sectors and make it to re-useable file. During its recovery process, few frames may be lost but you can use the rest of good frames to copy or edit on your NLE system.



NVS2500 & NVS2525 Technical Specifications

Device	NEXTO VIDEO STORAGE pro		NEXTO VIDEO STORAGE pro+	
Model Number	NVS2500		NVS2525 (Due in Q4 2010)	
LCD	2.4" Color TFT LCD: 320*240, 64K colors		2.4" Color TFT LCD: 320*240, 64K colors	
Video Preview	AVC Intra 100 / AVC Intra 50 AVC HD Canon MPEG-2 Full HD (MPEG-2 Long GOP 4:2:2) Convergent Design MPEG-2 Full HD DVCCAM / DVCPRO / DVCPRO 50 / DVCPRO / DV HDV (MPEG-2 Long GOP) Ikegami MPEG-2 Full HD (MPEG-2 Long GOP) JVC MPEG-2 Full HD (MPEG-2 Long GOP) XDCAM MPEG-2 Full HD (MPEG-2 Long GOP)		AVC Intra 100 / AVC Intra 50 AVC HD Canon MPEG-2 Full HD (MPEG-2 Long GOP 4:2:2) Convergent Design MPEG-2 Full HD DVCCAM / DVCPRO / DVCPRO 50 / DVCPRO / DV HDV (MPEG-2 Long GOP) Ikegami MPEG-2 Full HD (MPEG-2 Long GOP) JVC MPEG-2 Full HD (MPEG-2 Long GOP) XDCAM MPEG-2 Full HD (MPEG-2 Long GOP)	
Card Slots	SxS	ExpressCard/34 Compatible, Follows SxS Spec.	SxS	ExpressCard/34 Compatible, Follows SxS Spec.
	CF	CF Type 1/2, Micro Drive	P2	Supports P2 and P2E Card
Backup Speed(Avg.)	3in1	SD/ SDHC/ MMC/ MMCPlus/ MemoryStick/ MS Pro-HG/ MS Pro MagicGate		
		SxS : 80MB/sec P2 : 60MB/sec P2E : 70MB/sec CF : 30MB/sec SDHC : 20MB/sec MSPro : 10MB/sec		
External Harddrive Support	USB 2.0 : 480Mbit/sec		eSATA : 3.0Gbit/sec	
Battery	Internal : 3.7V 4600mA rechargeable Li-Poly battery (120 min) * Rechargeable by AC adapter, USB cable, FireWire 6-6pin cable and Ciger Jack charger External : Battery holder for recharging Internal battery with four standard AA cell batteries (40 min)			
AC Power Adapter	Input : 100-240V AC Output : 12V/1A DC		Input : 100-240V AC Output : 12V/1A DC	
Bus Power Operation	Operate with USB bus power or FireWire(IEEE1394) cable power		Operate with USB bus power or FireWire(IEEE1394) cable power	
Computer Interface	eSATA : 3.0Gbit/sec USB2.0 : 480Mbit/sec FireWire(IEEE 1394) : 400 Mbit/sec		USB2.0 : 480Mbit/sec FireWire(IEEE 1394) : 800 Mbit/sec	
File System Format	Internal hard drive : FAT32 Memory card (including SxS) : FAT12/16/32		Internal hard drive : FAT32 Memory card (including SxS) : FAT12/16/32	
OS Compatibility	Windows VISTA/XP/2000/ME MAC OS 9.2 or above, Linux2.4.18 or above		Windows VISTA/XP/2000/ME MAC OS 9.2 or above, Linux2.4.18 or above	
Dimensions	154mm * 91mm * 33mm (6.1inch * 3.6inch * 1.3inch)		154mm * 91mm * 33mm (6.1inch * 3.6inch * 1.3inch)	
Weight	430g/15.1oz (with Hard drive)		430g/15.1oz (with Hard drive)	
Contents	NVS2500 Main unit / USB cable / AC power adapter Shock protection / rubber jacket / Manual / eSATA cable FireWire cable / AA battery holder / Ciger Jack charger cable P2 card adapter		NVS2525 Main unit / USB cable / AC power adapter Shock protection / rubber jacket / Manual / eSATA cable FireWire cable / AA battery holder / Ciger Jack charger cable	

Backup Performance

		(MB/s)	(Per 32GB)
SxS	Copy	81.4	6min 33sec
	Verification	85.5	6min 14sec
	Multi-Copy	28	19min 03sec
P2E	Copy	72	7min 24sec
	Verification	76.2	7min 00sec
	Multi-Copy	28	19min 03sec
CF <small>[With CF Adapter]</small>	Copy	78	6min 50sec
	Verification	81	6min 35sec
	Multi-Copy	28	19min 03sec
SD	Copy	18.7	28min 31sec
	Verification	18.5	28min 50sec
	Multi-Copy	18.5	28min 50sec
Sync	Secondary Copy to External USB HDD	26.5	20min 08sec

NEXTO DI

Manufactured By NEXTODI Co, Ltd.

E-702 Digital Empire B/D 980-3 Yountong-Dong Suwon Korea

Tel. +82(0)313035370 Fax. +82(0)313035380

Web. www.nextodi.com

*Sony, XDCAM and SxS are registered trademarks of Sony Corporation, Japan.
All other trademarks are the property of their respective owners.

*NEXTODI, NVS2500, NVS2525 & X-Copy are registered trademarks of NextoDI Co, Ltd, Republic of Korea.